

Microsoft

Visio 2010 Top 10 Reasons

12/7/2009

Microsoft Visio 2010 Top 10 Benefits

The advanced diagramming tools of Microsoft® Visio® 2010 help you simplify complexity with dynamic, data-driven visuals and new ways to share on the Web in real-time. Whether you're creating an organizational chart, a network diagram, or a business process, the new tools and more intuitive interface in Visio 2010 make it easier to bring your diagrams to life. Start by building your diagram with a diverse set of professional-looking templates and modern, pre-drawn shapes. Then, easily link your diagram to popular data sources (such as Microsoft® Office Excel®). You'll see data automatically refresh right within your diagram, reflected in vibrant visuals such as icons, symbols, colors, and bar graphs. Finally, with just a few clicks, publish your data-linked diagram to Microsoft® SharePoint® Server 2010, and provide access to others on the Web, even if they don't have Visio. Together, simplicity, data-driven shapes, and Web sharing make Visio one of the most powerful ways to see and understand important information.

Top 10 new ways you can create and share vibrant, professional diagrams with Visio® 2010

Visio® 2010 Top 10 Reasons - Quick Version for AR/PR or events where there is no chance to go into details

1. Jump-start diagramming with a diverse set of pre-drawn shapes and templates for IT, business, process management, and more.
2. Find and access the features you need more quickly in Visio's new, more intuitive user interface.
3. Create and modify diagrams faster with new and improved tools and automatic drawing features.
4. Simplify large and complex diagrams using Subprocesses and Containers to group related shapes visually and logically.
5. Make your diagrams appealing and professional-looking in seconds with modern shapes and visuals, a rich gallery of themes, and Live Preview.
6. Bring your diagrams to life with dynamic, data-driven visuals and shapes, connected to real-time data.
7. Share interactive, refreshable, data-linked diagrams with others via their browser, with just a few clicks.
8. Ensure accuracy and consistency across your organization using Diagram Validation to check diagrams against business rules and logic.
9. Model SharePoint® workflows in Visio, and then run and monitor them on SharePoint Server® 2010.
10. Create actionable, visual mash-ups that combine rich Visio diagrams with other application services in SharePoint Server 2010.

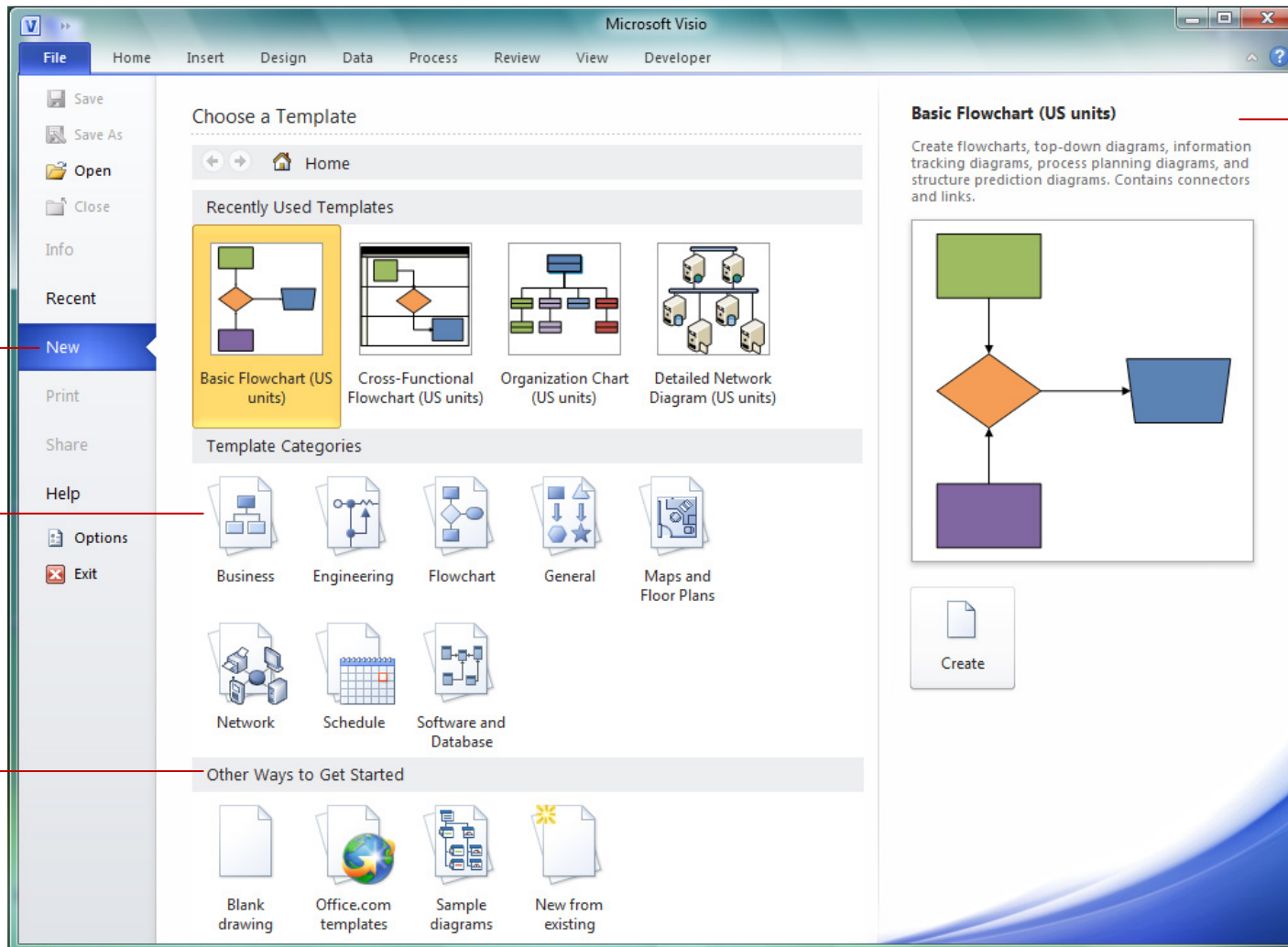
1. Jump-start diagramming with a diverse set of pre-drawn shapes and templates

Visio® 2010 helps you to start diagramming quickly with a diverse set of modern, pre-drawn diagramming shapes and templates for IT, business, process management, and more. Choose from a variety of templates and sample drawings on the **New** tab—including business, flowcharts, process management, engineering, project scheduling, networking, software and database design, maps and floor plans—and you're on your way. Visio 2010 also includes new, advanced templates for SharePoint Workflow, BPMN, and Six Sigma to help you model and share your processes more efficiently.

The **New** tab has everything you need to get started with diagrams.

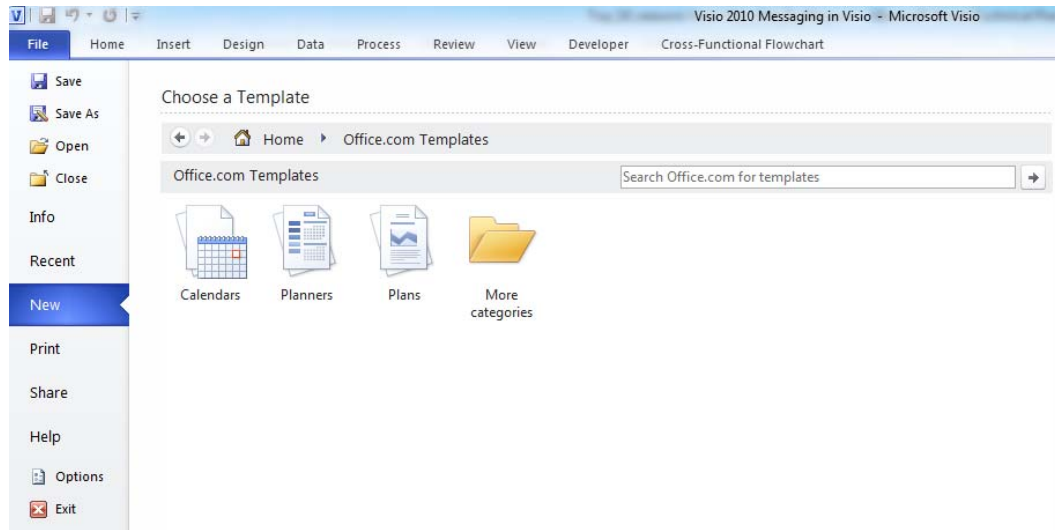
Choose from a variety of useful templates.

Start a diagram from scratch, an Office.com template, a sample diagram, or an existing drawing.



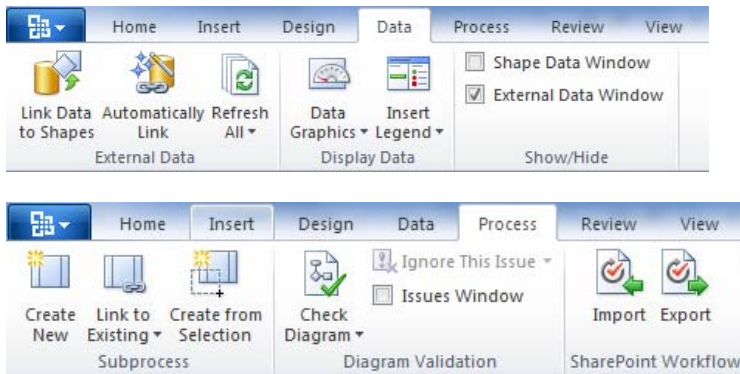
A preview of each template includes a description of the template and the types of diagrams you can create.

Choose the right template for the job to begin creating a professional-looking diagram. If you need to look further, you can visit **Office.com Templates** to easily browse through a wide variety of online templates for your specific diagramming need.

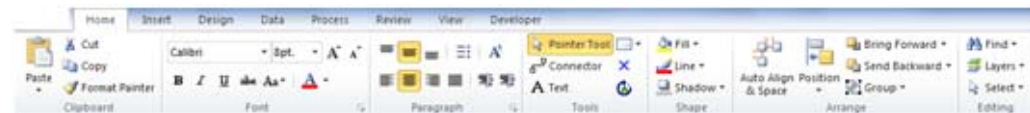


2 Find and access the features and tools you need more quickly

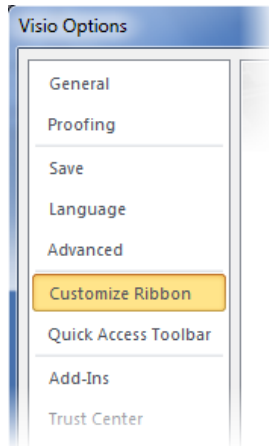
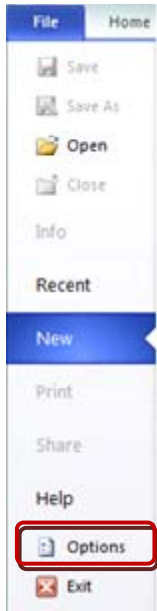
The improved organization and presentation of features and tools in Visio® 2010 makes every step in creating a diagram easier and more intuitive. With a more logical grouping of features in Ribbon tabs, you can find everything you need in one place to complete a diagramming task. The enhanced **Shapes** window helps you to quickly find and organize your shapes. And the new Status Bar helps you move within and between your diagrams more efficiently than ever.



Integration of the Microsoft® Office Fluent™ user interface in Visio® 2010 groups features and tools more logically, and makes them more visible in your workspace.



Each tab in the Ribbon contains the most common and frequently used commands for a task. The **Home** tab hosts commands for common drawing tasks and tools. Other tabs include the **Data** tab, which provides everything you need for creating dynamic, data-driven diagrams, and the **Process** tab, which includes Diagram Validation and other features helpful for creating business process diagrams.



Organize your favorite commands on Ribbon tabs or the Quick Access Toolbar.

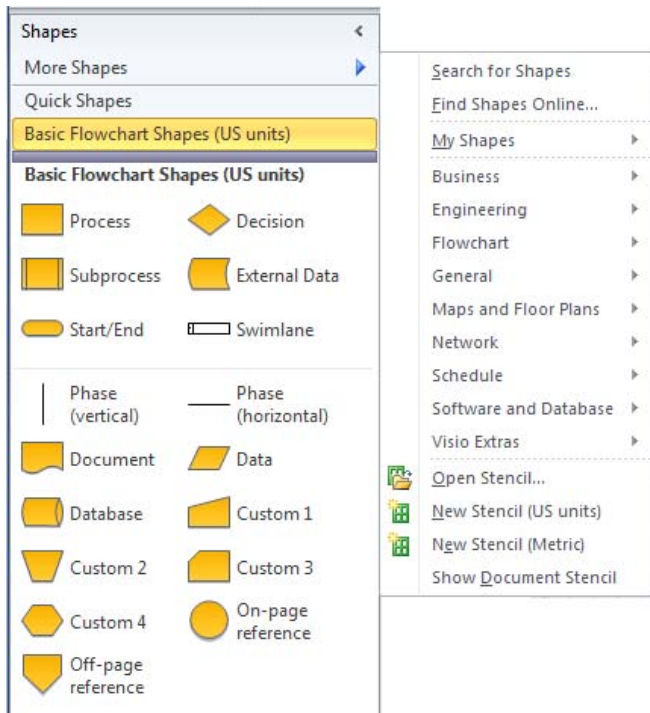


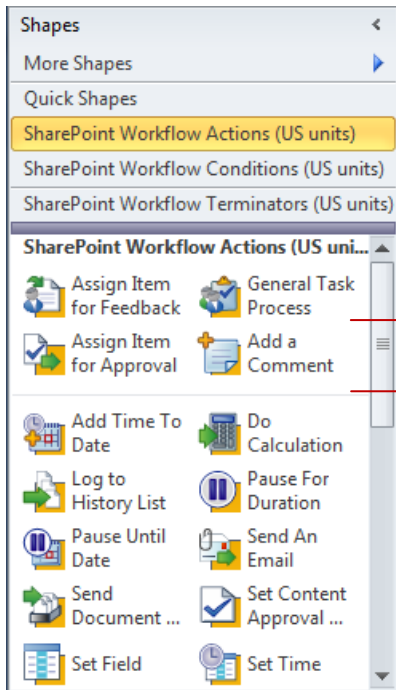
With one click, you can add any command to the Quick Access Toolbar, where you can access your most commonly used features regardless of which tab you are in. You can also customize the Ribbon by choosing which commands appear on each tab and their order, or create your own tabs on the Ribbon.



The **Shapes** window in Visio® 2010 makes it easier to find and select the shapes and stencils you want, and to move between them.

When you open a template, its stencils appear in a list view in the **Shapes** window. Simply click a stencil title bar to see its shapes. If you don't see a shape you need, click **More Shapes** to open other stencils, search for any shape in Visio, or find more shapes online.

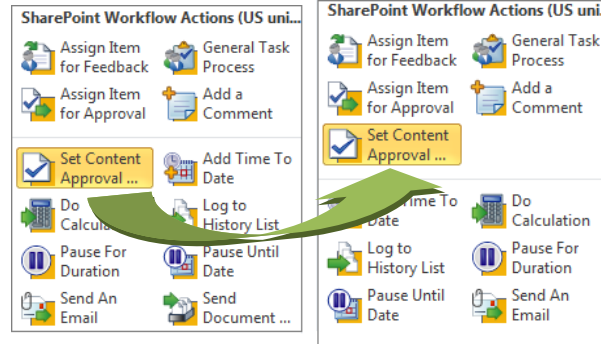




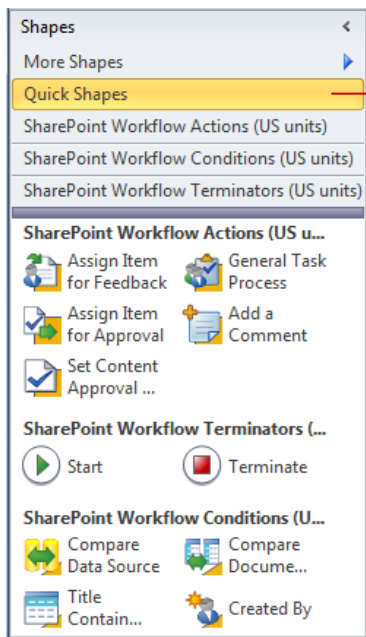
Quick Shapes area

Divider line

Near the top of every stencil – above a faint dividing line – the new Quick Shapes area holds the shapes you want to use most often in a stencil.

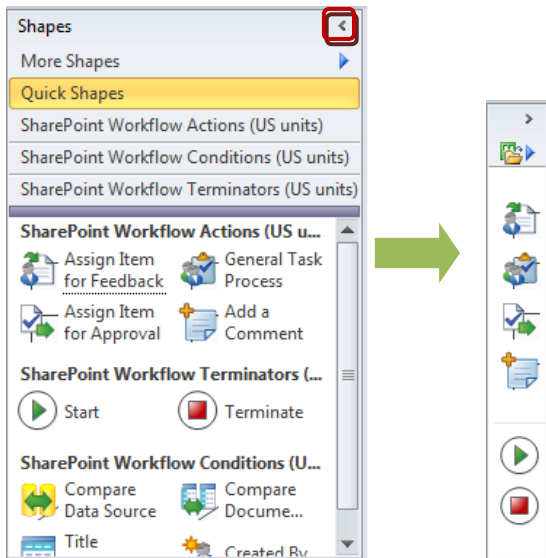


Drag shapes into or out of the Quick Shapes area as needed.



Quick Shapes stencil

The **Quick Shapes** stencil collects the shapes from each open stencil's Quick Shapes area in one convenient view, so you don't have to switch between stencils to find the shapes you want.



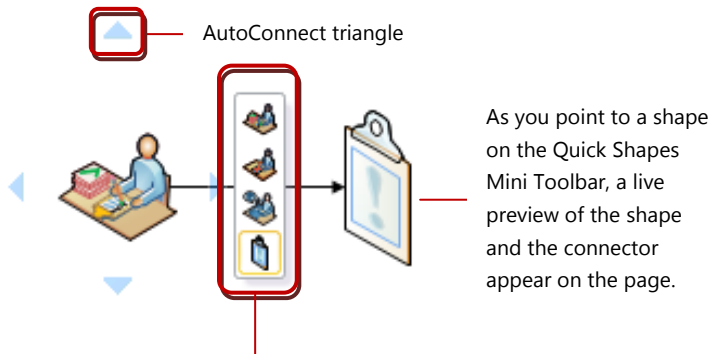
If you need to make more room for your drawing area, you can minimize the **Shapes** window at any time.



The status bar contains all of the tools you need to get the right view of your diagram. Quickly zoom in and out of the drawing page, switch to Full Screen mode, and move easily between open diagram windows.

3 Create and modify diagrams faster with new and improved tools and automatic drawing features

Whether you are creating a diagram from scratch, or adding and deleting shapes in an existing diagram, Visio 2010 helps you place, connect, and align shapes quickly and accurately with features such as the Quick Shapes Mini Toolbar, enhanced dynamic grid, **Auto Align & Shape**, automatic layout adjustment for added or deleted shapes, and page Auto Size.

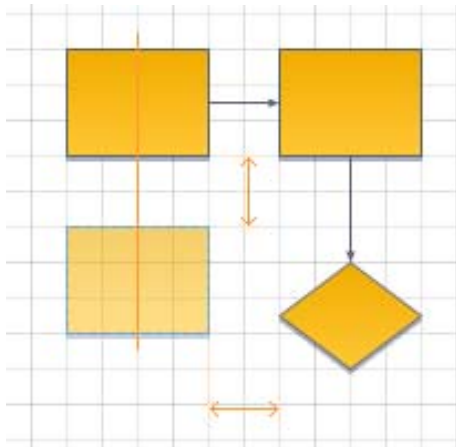


The Quick Shapes Mini Toolbar contains the first four shapes from the Quick Shapes area of the active stencil in the **Shapes** window.

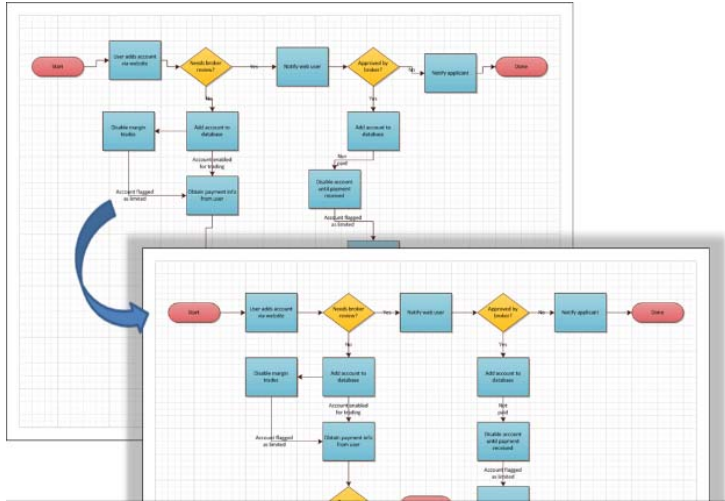
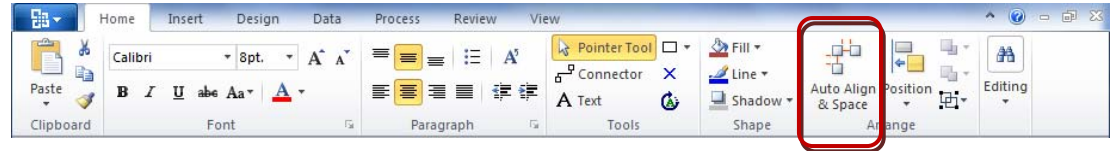
Add shapes with one mouse click, without leaving the drawing page. The Quick Shapes Mini Toolbar is a new floating window feature with Quick Shapes that appears when you point to a blue AutoConnect triangle. Clicking a shape on the Quick Shapes Mini Toolbar adds it to the page properly connected, aligned, and spaced.

The enhanced dynamic grid helps you position shapes relative to one another more accurately and with minimal effort as you drag them from the **Shapes** window to the page.

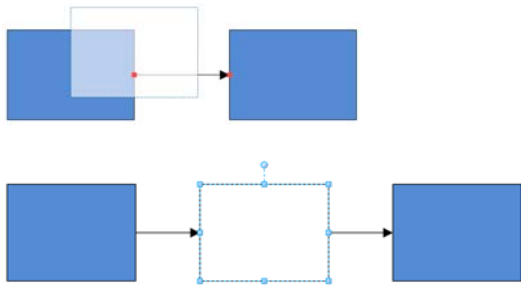
When you drag a shape to the page, visual alignment and snapping guides automatically appear to help you position the shape neatly in a diagram.



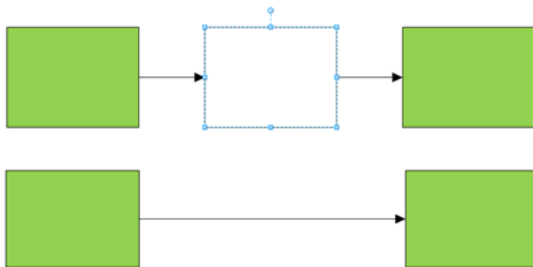
As you place, connect, and reposition shapes, you can align and position everything in the diagram or a selected area properly with one click using **Auto Align & Space**.



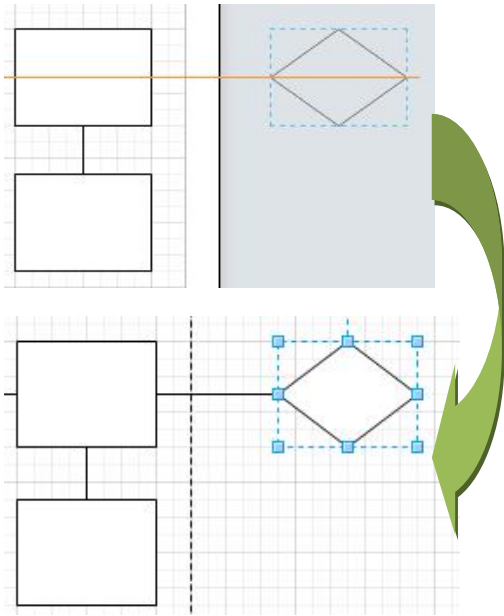
Add a shape between two shapes that share a connector



Remove a shape from between two shapes that share a connector



As you add or delete shapes, Visio 2010 makes intelligent, automatic layout adjustments to surrounding shapes and their connectors.

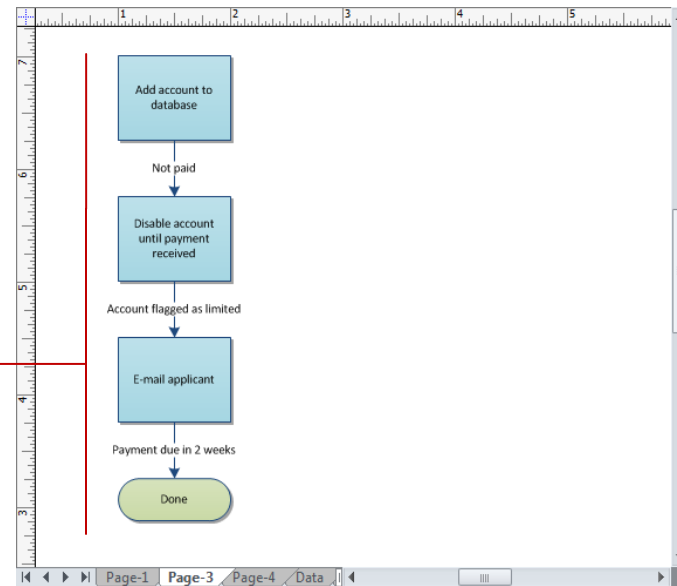
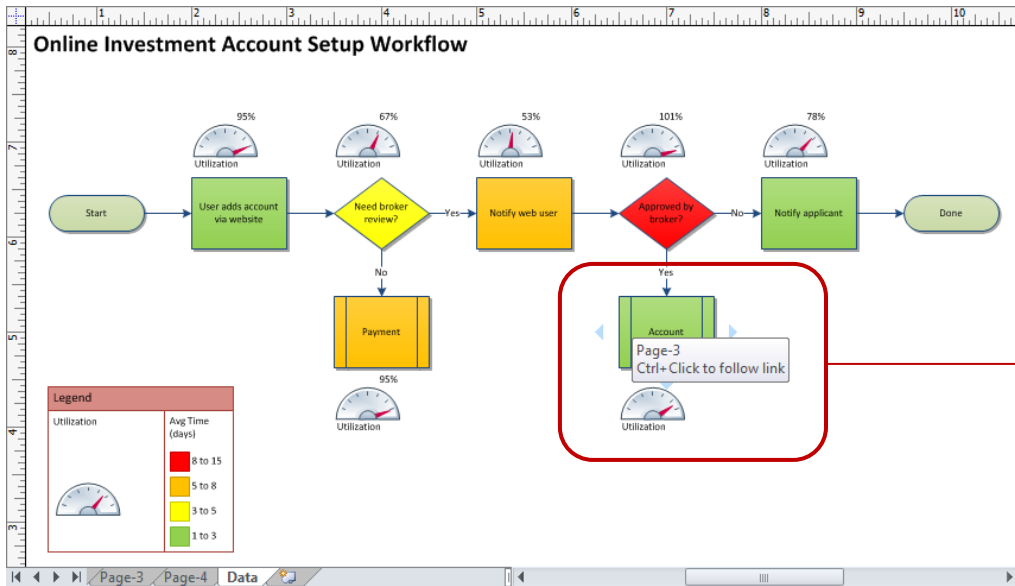


As your diagram grows larger and more complex, the new Auto Size feature lets you keep working without having to adjust the page size.

When you drop shapes outside of the current page area, the drawing page now expands automatically, giving you an infinite canvas to work with.

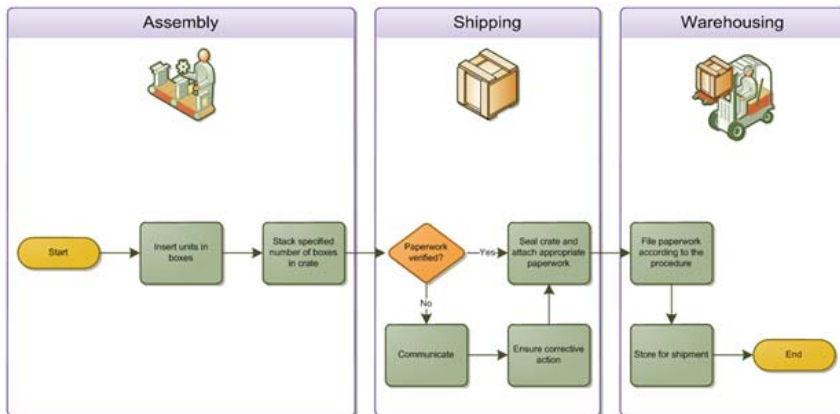
4 **Simplify large and complex diagrams by grouping related shapes visually and logically**

Subprocesses and Containers are time-saving features in Visio 2010 that simplify diagram creation and add clarity to your diagrams. As a diagram grows larger or becomes more complex, subprocesses and Containers can help you keep information more organized and understandable.

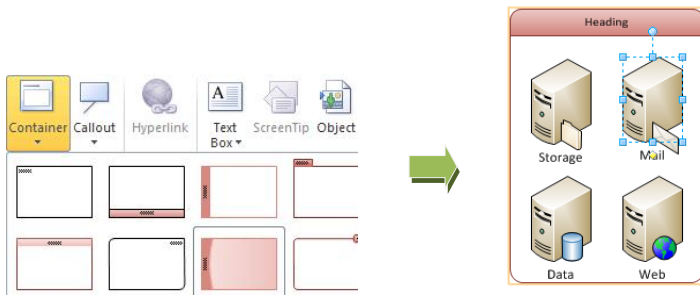


Break complex processes in diagrams into more manageable pieces using subprocesses. A subprocess is a re-usable mini-diagram that resides on its own page, but links to a Subprocess shape in a larger diagram. Visio makes it easy for you to quickly create subprocesses as you are working. Create a subprocess from scratch or from selected shapes, or link a Subprocess shape to an existing page that already contains a subprocess mini-diagram.

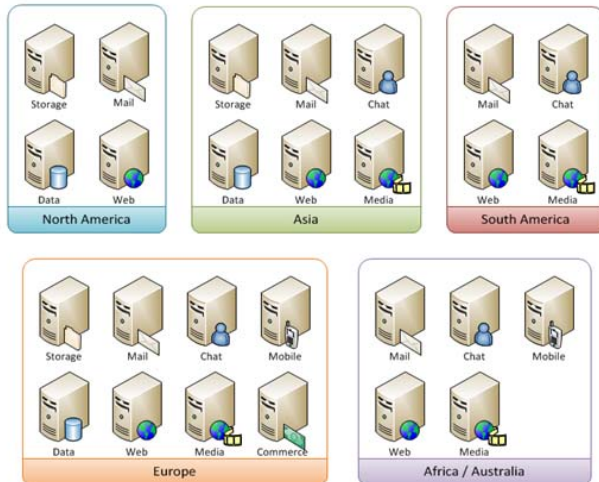
Packing and Storing Process



Containers clarify how different sets of shapes relate to each other in diagrams, and help you organize sets of shapes logically and visually without having to group them. Because the shapes in a Container do not belong to a group, you can quickly add, reorder, and remove shapes simply by dragging them into, within, or out of the container.

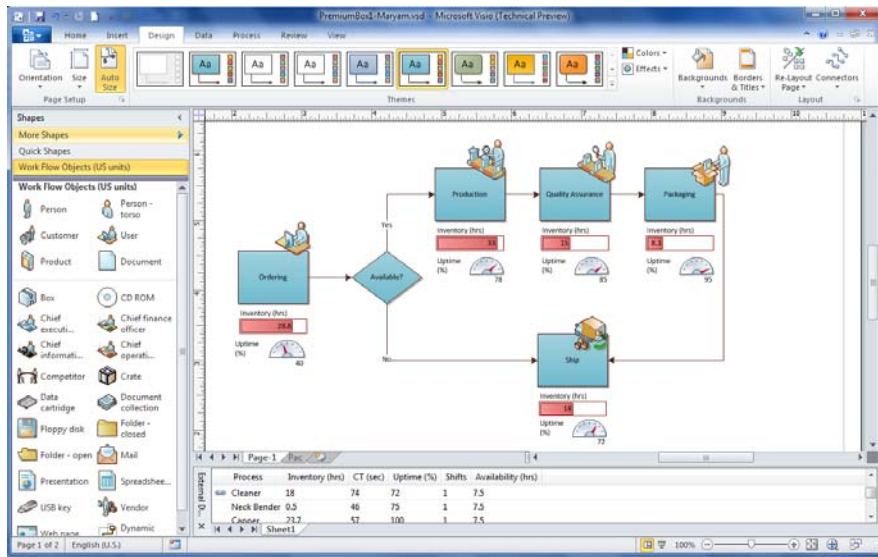


Worldwide Datacenter Capabilities Contoso IT



5 Make your diagrams appealing and professional-looking in seconds

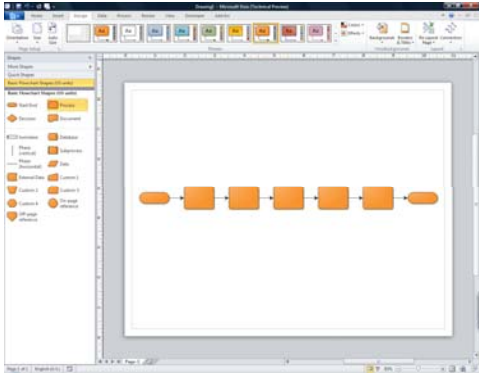
Visio 2010 helps you make diagrams look great with a wide range of design options, including modern shapes and visuals, a rich gallery of themes, and Live Preview.



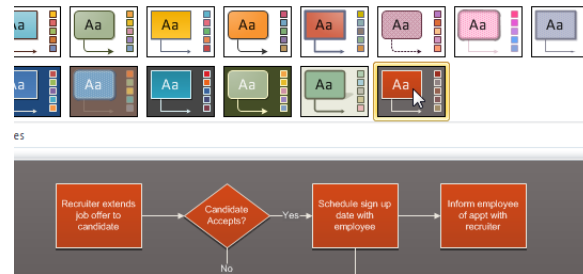
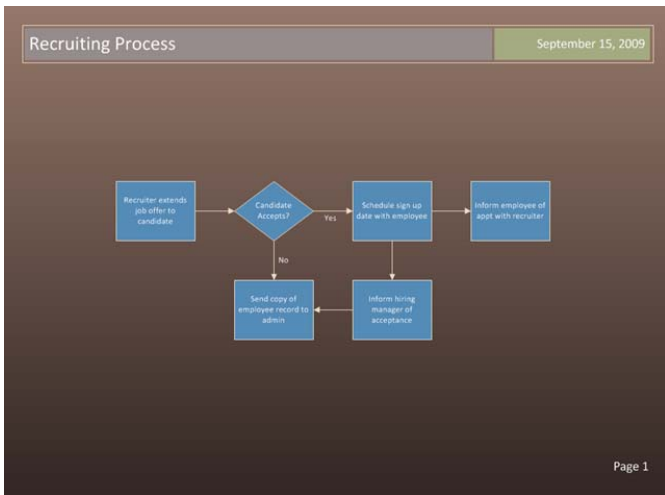
The Live Preview feature in Visio shows you how any formatting options such as themes, fill colors, lines, alignment, and positioning will look on the drawing page before you commit to them.



When you click a theme, the color and text formatting for that theme automatically appear in the **Shapes** window and on the drawing page.

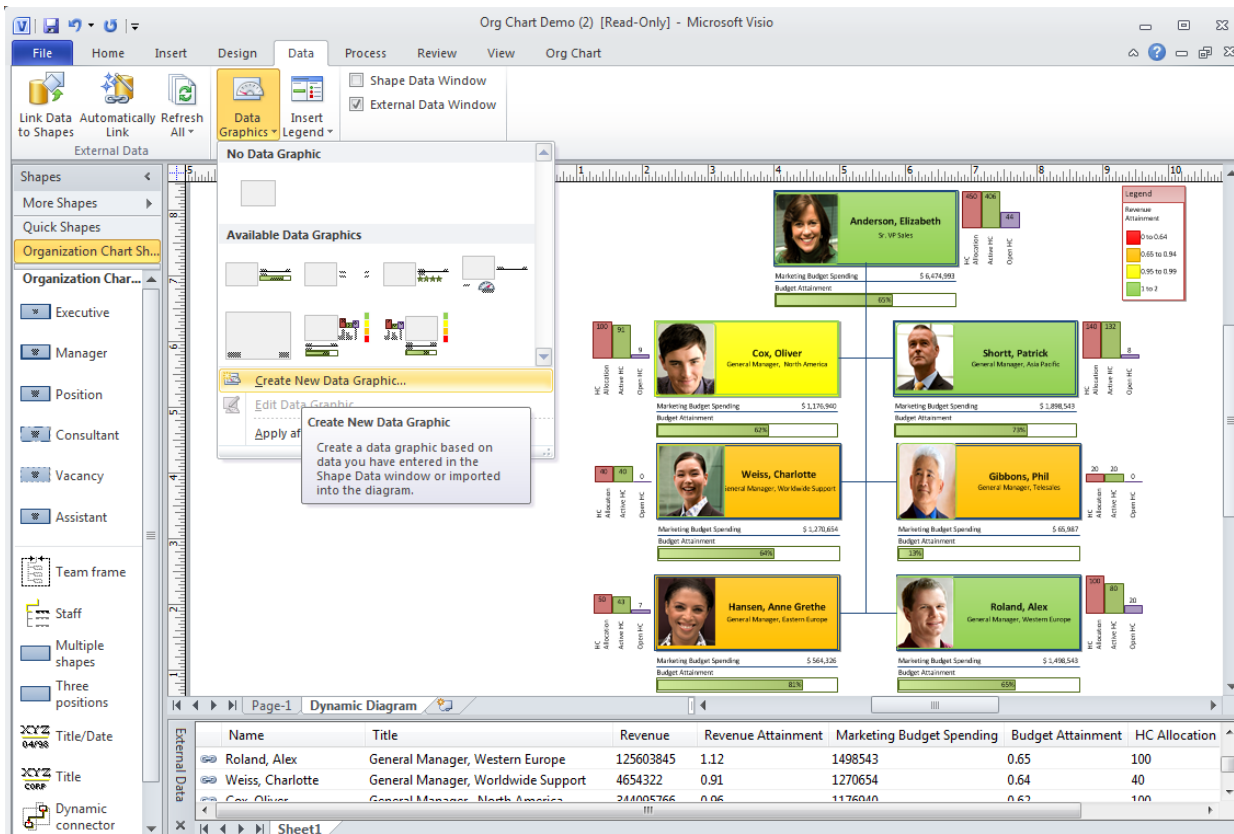


You can further enhance your diagram's appeal by applying attractive backgrounds, borders, and titles that share the same look. After you choose a background, additional themes with background colors appear in the Themes gallery. When you choose a theme, the background automatically takes the color from the theme.



6 Bring your diagrams to life with dynamic visuals and shapes that are connected to real-time data

Gaining a clear and complete view of information that matters to your business often requires both a high-level perspective and detailed data. But moving between a diagram and one or more data sources can be cumbersome and time-consuming. With just a few clicks, Visio® 2010 helps you see the entire picture by gathering detailed data from one or multiple data sources in one dynamic, data-driven diagram. The Data Selector wizard helps you quickly integrate data from Microsoft® Office Excel®, Access®, SQL Server®, SharePoint® Services, or any OLEDB or ODBC data source into your diagram. You can then keep the linked data in your diagrams up-to-date without any additional effort using Automatic Refresh.

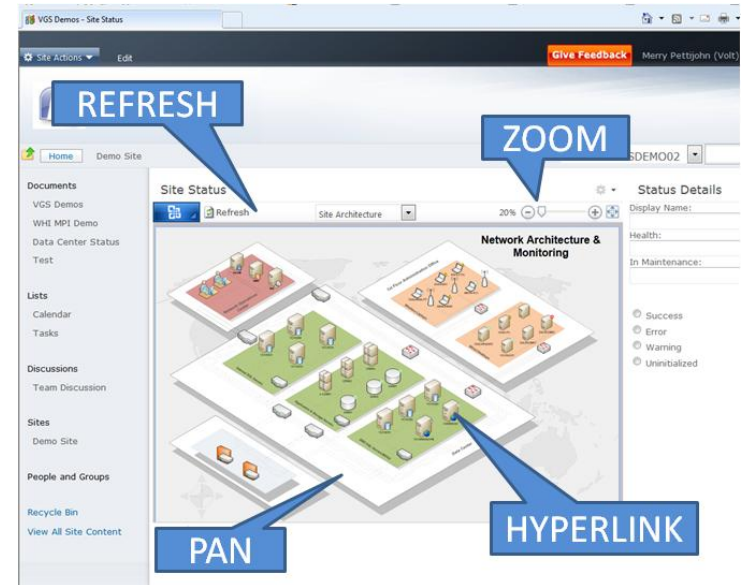
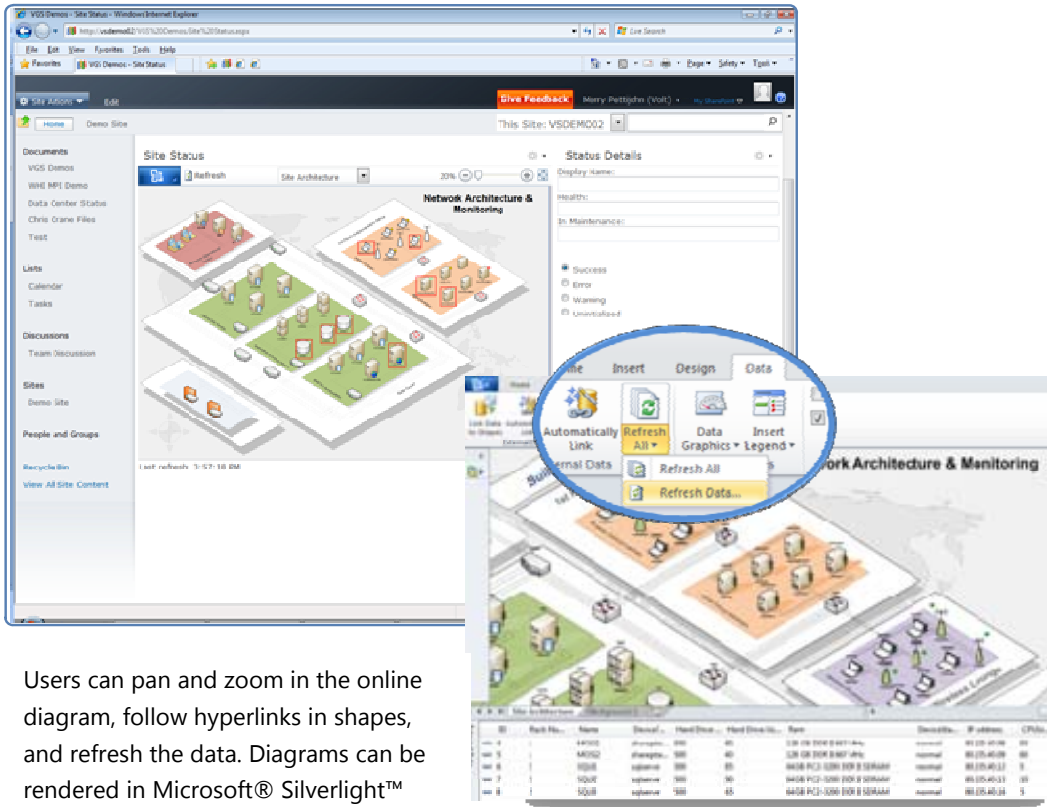


Once you've linked your diagram to a data source, you can add meaningful graphics that show key data right within the shapes of your diagram. Display real-time data within your diagrams, based on conditions you define, using color, icons, symbols, and data bars. Then, add a legend to explain the meaning of your data-linked graphics. Because the graphics are automatically linked to a data source, the displayed visuals are always current.

7 Share interactive, refreshable, data-linked diagrams with others via their browser

With Visio® 2010, sharing your diagrams with others is easier than ever. Simply connect your diagram to one or more data sources (such as Excel), and with a few clicks, publish your data-linked diagram to SharePoint® Server. Online users can see your real-time information in their browsers at a high level, right on the diagram, or delve into the details – even if they don't own Visio.

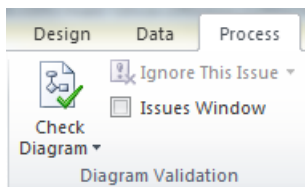
With Microsoft® Office Visio® 2007, you can share Visio diagrams as by saving them as static Web pages, or by saving them in PDF or XPS format. In Visio 2010, you can now share dynamic, data-linked diagrams in SharePoint Server, and keep everyone on the same page by ensuring that people can always view the most current version of a diagram.

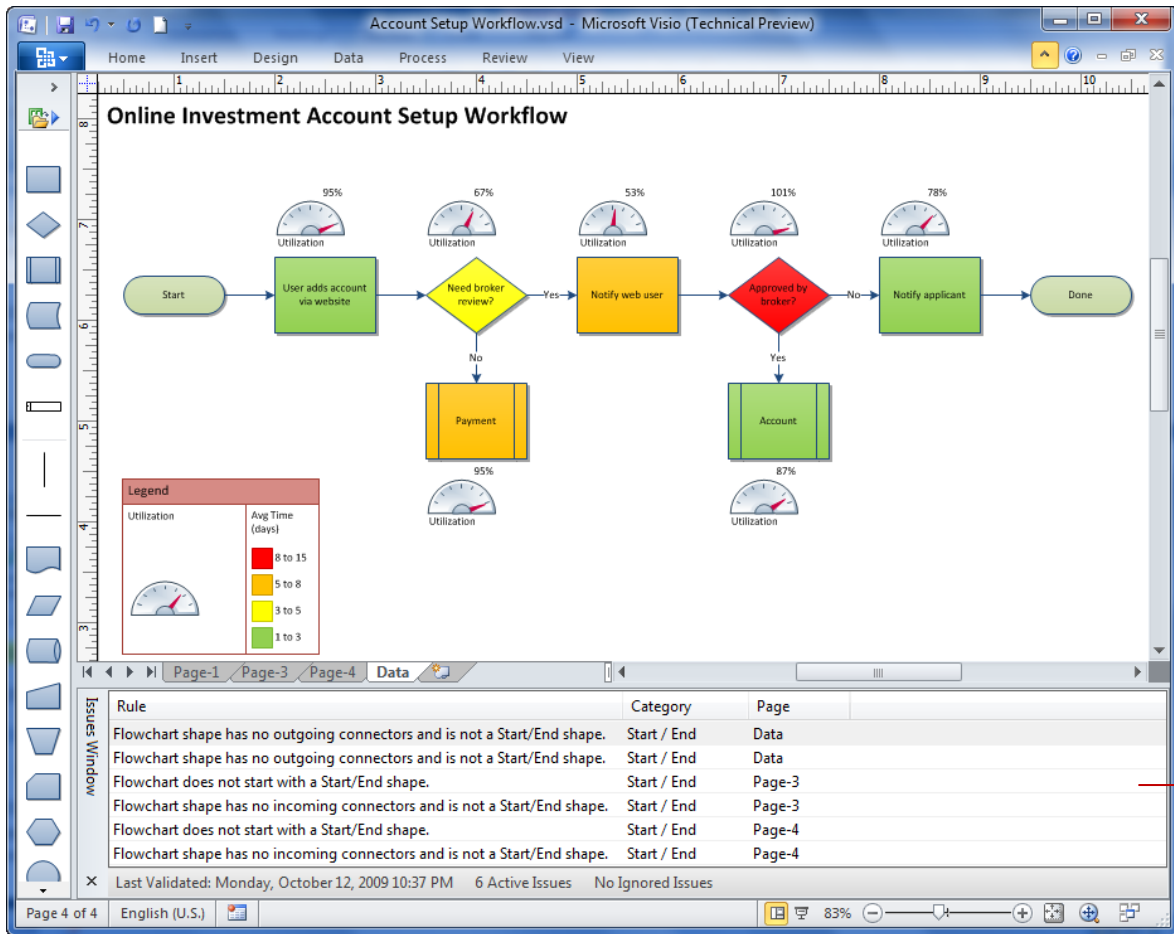


Users can pan and zoom in the online diagram, follow hyperlinks in shapes, and refresh the data. Diagrams can be rendered in Microsoft® Silverlight™ (high-fidelity) or in PNG format for those who don't have Silverlight.

8 Ensure accuracy and consistency in diagrams using diagram validation

Diagram Validation helps you check for common errors and support diagramming standards across your organization. With one click, you can check a diagram against a set of rules to make sure the diagram is logical and properly constructed.





The **Issues** window alerts you to areas in the diagram that need attention, but does not require you to fix issues to complete the diagram.

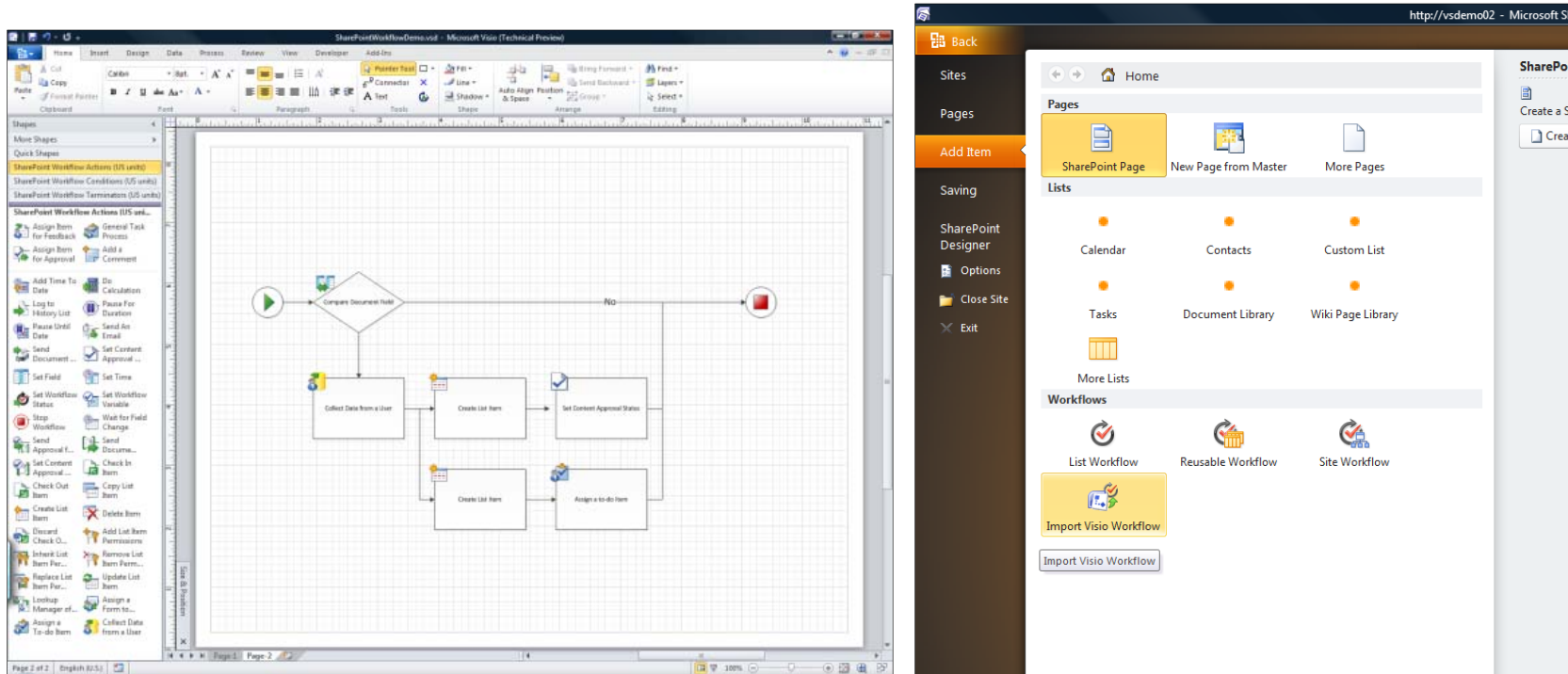
You can use validation in Visio® 2010 to check any diagram with associated business rules and logic. Visio now includes intelligent templates with business rules and logic for Flowchart, Cross-Functional Flowchart, SharePoint Workflow, and BPMN diagrams. If you want to develop your own set of validation rules, Visio 2010 supports an extensive Validation API that your developers can use to meet your organization's needs.

For more details on developing custom validation rule sets, see: <http://blogs.msdn.com/visio/archive/2009/09/10/creating-custom-validation-rules-for-visio-2010.aspx>

9 Model SharePoint® workflows in Visio, and then run and monitor them on SharePoint® Server 2010

Visio® 2010 makes it easier than ever to create and monitor SharePoint workflows with a new advanced template that contains SharePoint workflow rules and logic, and the ability to export and import workflows between Microsoft® SharePoint® Designer 2010 and Visio® 2010. Create a SharePoint workflow diagram in Visio

2010. Validate it against the rules to ensure that your workflow is structurally and logically correct. Then, export your workflow to SharePoint Designer to add configuration details and run the workflow. Once the workflow is running, you can track its progress visually in a browser using Visio Services.



You can also import a workflow file that you create in SharePoint Designer, open it in Visio 2010, and then generate a diagram of the workflow that you can view and modify. Pass a file back and forth between SharePoint and Visio with no loss of data or functionality.

10 Create actionable, visual mash-ups that combine rich Visio® diagrams with other application services in SharePoint® Server 2010

By combining Visio® diagrams, real-time data, and different applications in SharePoint®, you can share a visually compelling, interactive dashboard with your audience. Visio Services and SharePoint Server integration enables you to create visual mash-ups of actionable data and diagrams for a high-fidelity viewing experience.

The screenshot shows a Visio diagram titled "Quote Process Status" within a SharePoint environment. The diagram is organized into lanes for different divisions: Insured, Retailer, Wholesaler, Risk Division, and System. The workflow includes tasks such as "Application generated", "Application emailed", "Application reviewed - retail", "Application reviewed - wholesale", "Underwriter review", and "Application registered/cleared". A decision diamond asks "Meets underwriting params?". A red box highlights the "Application reviewed - wholesale" task, which has a red status indicator. A callout box titled "Process Step Details" provides information for this task: "Application reviewed - wholesale", "Owner Information" (Rodrigo Boogard, Dept. Manager, Applications, Office: A492, Email: RBoogard, Manager: Ali Kader), and "Related Documents" (Review Assessment). Another red box highlights a "Highlight Steps by Owner" web part with a list of names: Robert Dale, Rodrigo Boogard, Karen Baden, James Smith, and Not Assigned.

People viewing your diagram in their browser can click a shape in the diagram and immediately see related information in a connected Web part, such as an InfoPath Form or SharePoint List.

In SharePoint, you can add Web parts that are connected to your Visio diagram, all in the same view. Configure Web part connections in the browser while you edit a Web part page, or through SharePoint Designer. For more advanced, customized mash-up functionality, Visio 2010 provides API support that allows you to write code to combine Visio diagrams with other application services in SharePoint.