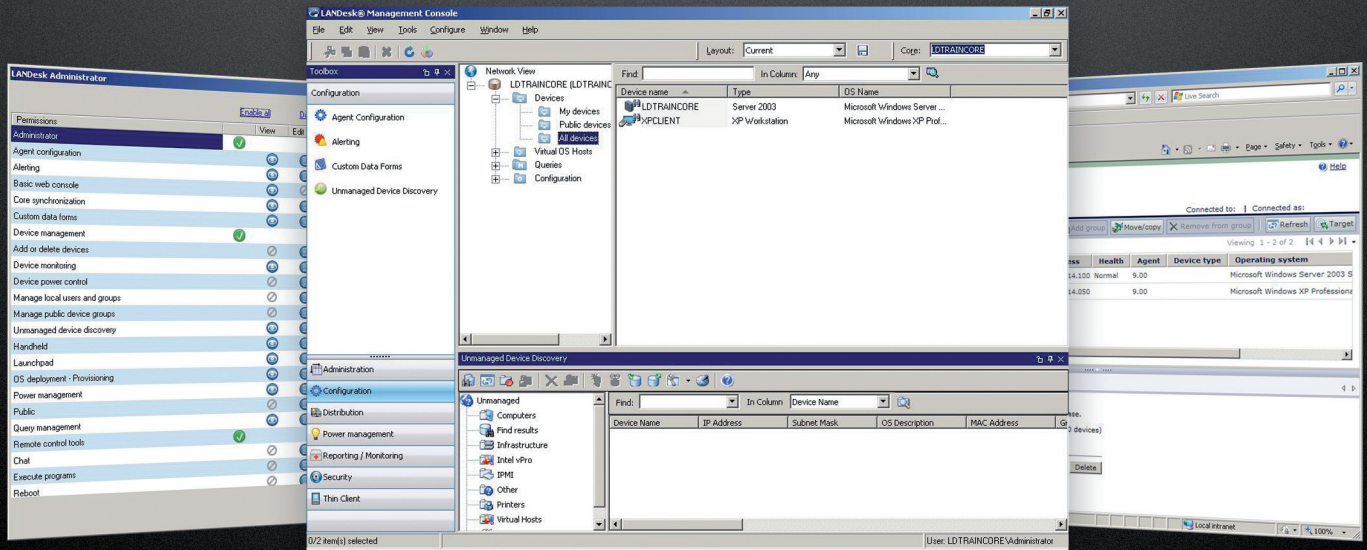


LANDesk® Management Suite 9



Discover, Manage, Update and Protect
from a Single, Integrated Console



User migration assistance



Software license monitoring



Software distribution



OS deployment



Discovery



Remote control



Application virtualization



Power management



Hardware-independent imaging



Reports and dashboards

“Upgrading new software releases used to be a very hectic process. LANDesk® Management Suite enabled us to upgrade the whole bank to Office 2007 in two days. We could have done it in a single day, but we wanted to deploy it in two phases. Without LANDesk it would have taken us months or more to complete. LANDesk saved us a lot of time.”

—Mohammad Usman Butt
IT Security Supervisor
Industrial Bank of Kuwait

From Reactive to Proactive: Beyond the Break/Fix Mentality

These days, enterprise IT infrastructures are so heterogeneous that most IT managers could use a supplemental ulcer insurance policy. Even folks at the few enterprises not yet grappling with Macs and Unix-based operating systems still get chronic heartburn just trying to manage patches and upgrades for all the different versions of Microsoft® Windows® they’re supporting.

Either way, most IT departments have so much going on beyond mere OS maintenance that it’s nearly impossible to move beyond the “just fix whatever’s broken” mindset. And that’s assuming you actually have an accurate picture of how many devices are connected to your infrastructure, how many licenses you have for crucial applications, and how many of those licenses are actually being used.

Even if you have a pretty good handle on those numbers, and even if your IT team *has* emerged from the primordial slime of sneakernets and moved on to pushing packages to users—or perhaps even offering self-service portals—there’s much more you can do to make your job easier and more effective. In fact, with the right solutions you can achieve what many have considered a pipe dream for far too long—you can make changes that cause IT to be viewed as a proactive operation with significant business value rather than a reactive consumer of company capital.

For example, how about saving a boatload of money by reclaiming a slew of unused software licenses no one knew about? Or instituting power-management policies that drastically reduce expenditures while boosting the company’s image?

And trust us—we know that “reactive” reputation is completely undeserved. We know you spend countless hours looking for powerful, innovative solutions to improve the IT experience for everyone in your organization. But we also know covering all the necessary bases adds a new wrinkle to your problems: It requires so many different consoles that IT still wastes untold hours learning, setting up, checking, and flitting between them all.

Right about now you’re probably nodding your head and wondering, “So why hasn’t anyone created an integrated systems management solution? Why isn’t there a single solution that acknowledges and facilitates systems management as a collaboration of capabilities that act in concert?”

We’re glad you asked. The answer is simple: There is—it’s called LANDesk® Management Suite.

The Perfect Balance between User Flexibility and Enterprise Readiness

LANDesk Management Suite gives you all the control you need—no matter how big or diverse your environment—to address IT concerns in the 21st century. It enables you to discover devices in your network and store information on its configurations, OS, processor speed, installed memory, hard drive capacity, loaded applications, and more in a central database. That information helps you optimize the systems under your umbrella, and when you combine it with impressive reporting features you have all you need to thoroughly prepare for audits.

But that’s just the beginning. LANDesk Management Suite includes gateway technology that makes it a piece of cake to manage each system—whether it’s at headquarters or on the other side of the world—based on the system’s unique needs. And if ever there’s a problem, simply launch a remote session to quickly resolve it and keep customers productive. Best of all, LANDesk Management Suite doesn’t impose any preconceived notions about how you should manage your environment. You get to draw the line between user autonomy and enterprise readiness to create the perfect balance between flexibility and proper precautions.

Key Features

LANDesk Management Suite provides a multitude of notable benefits in several critical categories.

Enterprise Efficiency and Scalability

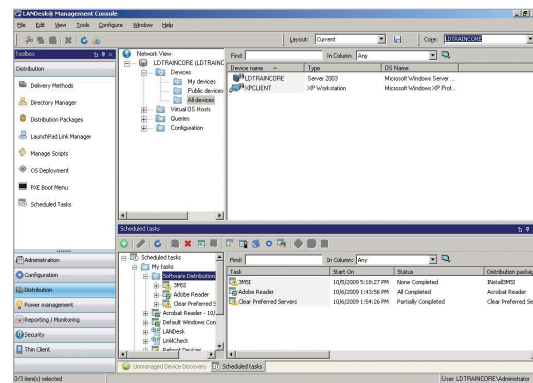
- **NEW Content replication**—Replicates content from any file server source to other servers, enabling faster, more controllable, more reliable, and more efficient distribution of content, patches, updates, etc.
- **NEW Core synchronization**—Lets you manage configurations and tasks for all of your cores from one place
- **NEW Enterprise reporting**—Now providing a more powerful and flexible reporting tool that is capable of displaying the data you care about in the way you need to see it
- **Rollup core**—Lets you collect and view data from all of your cores, providing a centralized view of your enterprise
- **LANDesk® Management Gateway technology**—Gives you complete anytime, anywhere management access to users outside your corporate firewall and at geographically distributed sites
- **Granular role-based administration**—Makes console user management easy, secure, and flexible
- **LANDesk® Dynamic Preferred Server**—Enables you to distribute packages with functional load balancing and fault tolerance
- **Off-core inventory service**—Increases efficiency by distributing inventory processing across multiple servers
- **Agent watcher**—Lets you restart downed agents, restore them to their original state, and alert IT staff if a user removes or tampers with one
- **Enterprise alerting**—Helps you maintain control and keep the most important information in one easy-to-view section

Software License Monitoring

- **NEW All-new interface**—Lets you see and manage data in ways that meet your singular needs: IT administrators can view the network from a product perspective, license administrators can view it from a license perspective, and managers can take an organizational or group perspective
- **NEW Dynamic products**—Simplify asset management with version wildcarding that lets you merge multiple product versions into a single, dynamic product
- **NEW Return on investment (ROI) reports**—Give you the information you need to manage licenses more wisely and reduce license costs. Additional reports help decrease the likelihood of being audited—as well as avoid being stuck with major fees in the event you are
- **Software usage monitoring**—Tells you who's using what and how often so you can prioritize license allocation
- **Comprehensive license monitoring**—Detects software license use with application usage, license reporting, and compliance reporting
- **Hyper-aware scanning**—Helps you find known and unknown applications, as well as define and track previously unknown applications

Software Distribution

- **NEW Return code mapping**—Defines return codes to improve application installation accuracy
- **NEW MSI native support**—Enables you to copy and paste MSI command line calls
- **NEW Simplified work flow**—Makes for easier, faster scheduling of package installations



“LANDesk provides me the tools and technologies I need to secure and manage my IT environment in a way that saves me time and money, while allowing me to focus on other important projects.”

—Miguel Laruccia
IT Manager for the Latin America Region
Louis Vuitton

“LANDesk has changed the way we work, allowing IT to be a better partner with business, prove its value, and be more proactive in creating and easily deploying solutions that help the business succeed.”

—Rob Young
Manager of End User Support
American Modern Insurance Group

Key Features continued

- **NEW Simplified bandwidth controls**—Help you quickly, easily set bandwidth options
- **Intelligent, location-aware distribution**—Helps you customize configurations appropriately
- **Task-based modeling**—Separates package building and delivery methods to improve efficiency
- **LANDesk® Targeted Multicast™**—Lets you distribute large packages to multiple users with minimal bandwidth and without dedicated hardware or router reconfigurations
- **LANDesk® Peer Download™ technology**—Allows you to access packages already delivered to a subnet
- **Prerequisite checking and package chaining**—Installs prerequisite packages and enables you to automatically install multiple packages in a single operation
- **Task scheduler**—Integrates with directory-service and asset-inventory databases to help you easily select targets
- **Package-agnostic distribution**—Deploys any package type and provides access to multi-file MSI support
- **Self-service portal**—Reduces help-desk incidents, empowers users to initiate approved installations, and enables faster troubleshooting via detailed histories
- **Policy-based distribution**—Deploys multiple software packages in a single policy and ensures the packages are available for future updating and reapplication if necessary

OS Deployment and Profile Migration

- **NEW Ultra-efficient deployment**—Leverages our patented Targeted Multicast and Preferred Server technologies to quickly get large image files onto target machines
- **NEW Automated profile migration**—Captures user, application, and desktop settings and files and restores them to new machines
- **NEW Hardware-independent imaging**—Manages a driver library and inserts only the relevant drivers at run time, then automates the SYSREP process so Windows can find them
- **PXE proxy technology**—Makes it a breeze to provision bare-metal machines without changing the router configurations or standing up multiple servers
- **Windows PE and Linux PE support**—Enables you to image up to three times faster than previously, and provides better hardware recognition and driver support

Remote Control

- **Console-based control over role-based rights**—Centralizes management duties and boosts productivity
- **Application-layer agent**—Improves performance and prevents conflicts
- **Remote management**—Enables you to perform maintenance anytime with remote wake, remote reboot, and remote application launch abilities
- **Integrated chat, bidirectional file transfer, and automatic session logging**—Help you rapidly resolve problems and create reports and full audit trails
- **Browser-based support**—Lets you resolve issues anywhere on the network from any computer with a browser
- **Platform flexibility**—Lets you use the platform of your choice—Mac or PC—to remotely manage any system without having to jump from console to console

Inventory Management

- **Comprehensive inventory database**—Lets you filter inventory data through a system with information on thousands of products and manufacturers to obtain more accurate product and file recognition with normalized data that can be leveraged by LANDesk® Asset Lifecycle Manager
- **Scalable discovery**—Facilitates real-time, subnet-level tracking of unmanaged networked devices, even if those devices have a firewall enabled
- **Detailed asset views**—Provide asset tag, serial number, embedded pointing device, fixed-drive, and CD-ROM information
- **Reporting dashboard**—Helps you publish reports to a file share in HTML, PDF, DOC, RTF, or XLS formats
- **Up to eight threads**—Significantly improves inventory service performance
- **Bandwidth efficiency**—Enables automatic unmanaged device discovery (UDD), agentless inventory, and delta inventory scans with compression

LANDesk® Power Manager

- **NEW Historical tracking and reporting**—Monitors actual system usage and corresponding savings at the client level
- **NEW Process-sensitive policy triggers**—Identify processes or applications that shouldn't be interrupted by power policies

Visit www.landesk.com for more information.

To the maximum extent permitted under applicable law, LANDesk assumes no liability whatsoever, and disclaims any express or implied warranty, relating to the sale and/or use of LANDesk products including liability or warranties relating to fitness for a particular purpose, merchantability, or infringement of any patent, copyright or other intellectual property right, without limiting the rights under copyright.

LANDesk retains the right to make changes to this document or related product specifications and descriptions, at any time, without notice. LANDesk makes no warranty for the use of this document and assumes no responsibility for any errors that can appear in the document nor does it make a commitment to update the information contained herein. For the most current product information, please visit www.landesk.com.

Copyright © 2010, LANDesk Software, Inc. and its affiliates. All rights reserved. LANDesk and its logos are registered trademarks or trademarks of LANDesk Software, Inc. and its affiliates in the United States and/or other countries. Other brands and names may be claimed as the property of others. LSI-0863 1010/BB/DL

